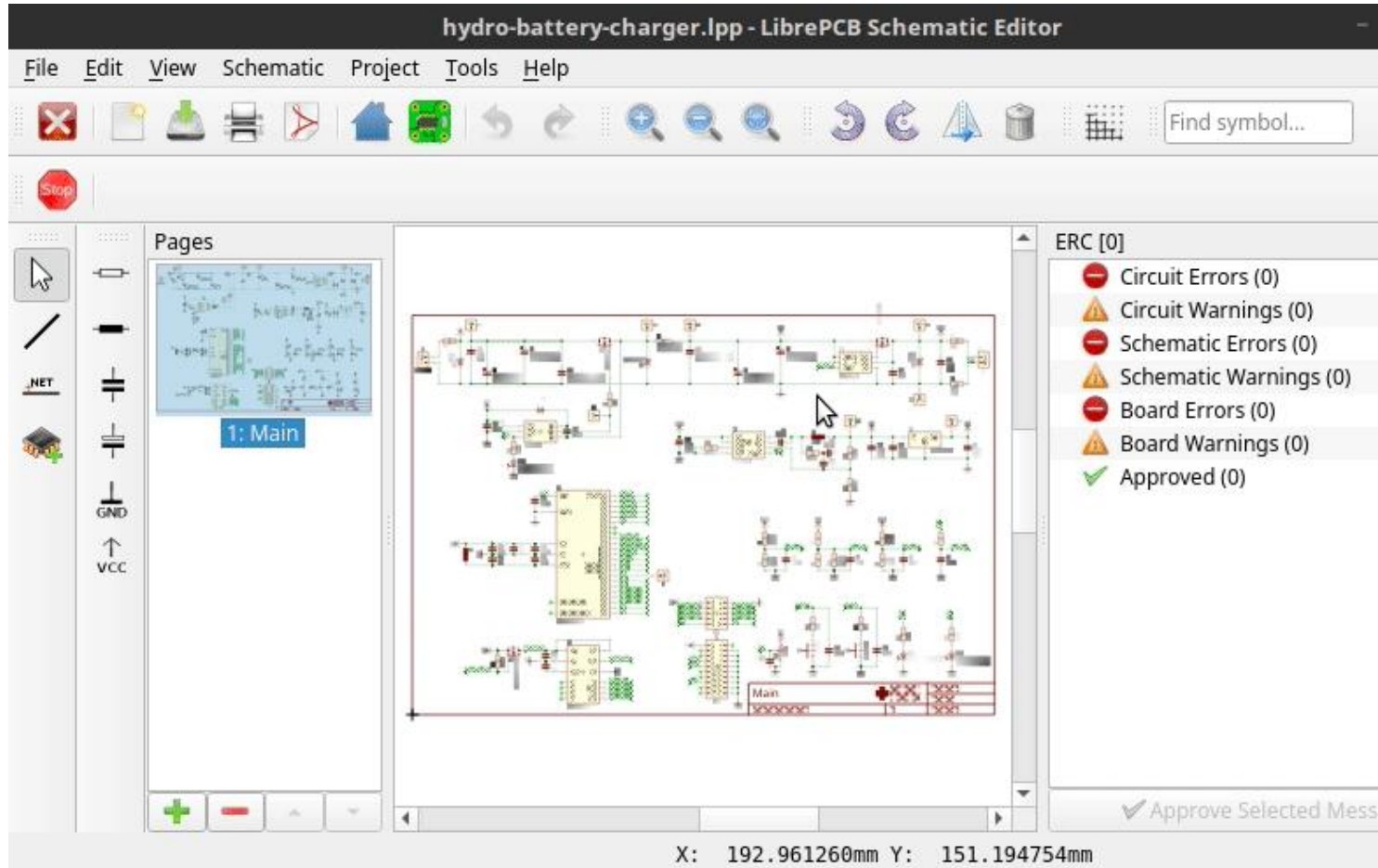


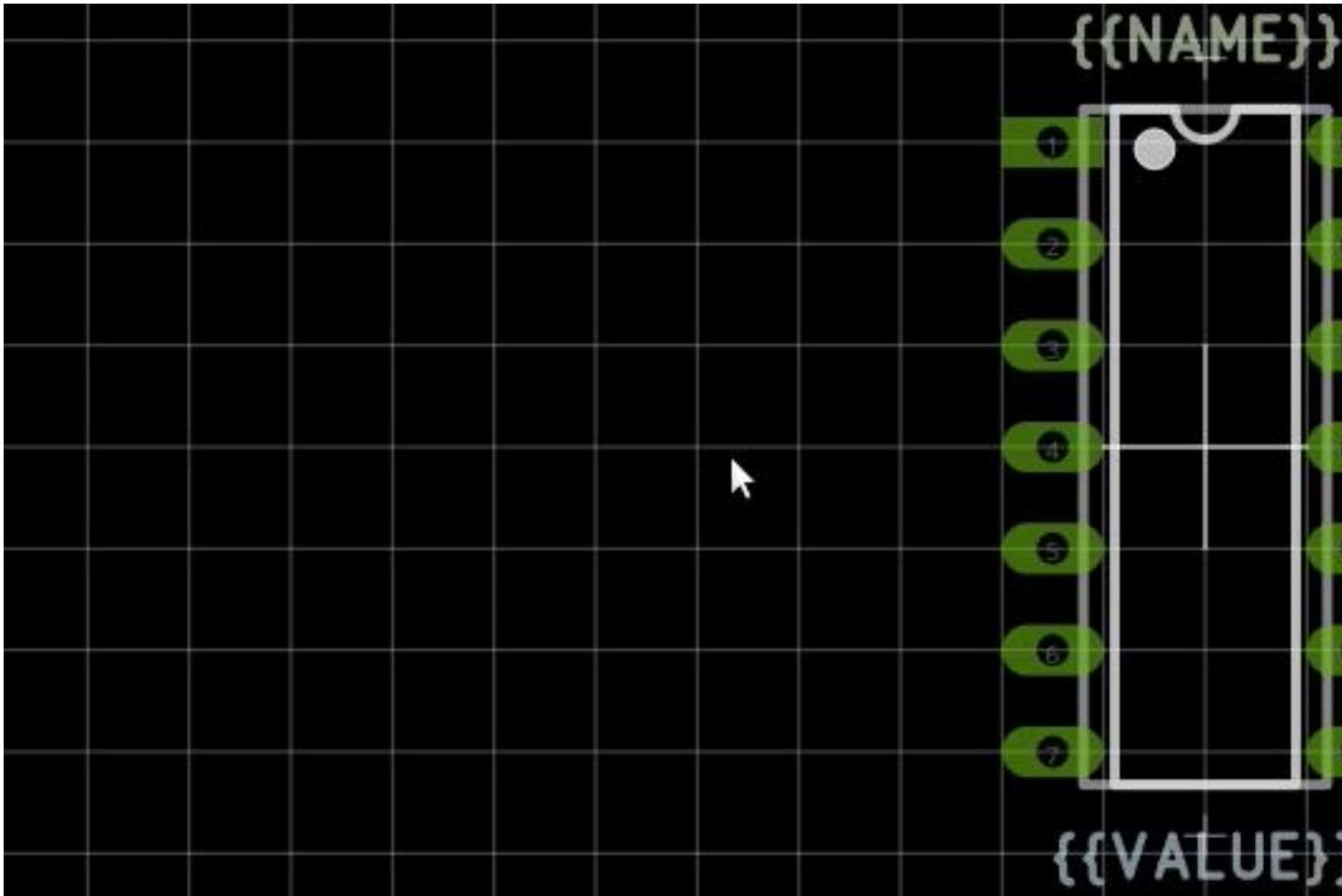
K dispozícii je nová verzia LibrePCB - 0.1.4

Tento EDA nástroj na tvorbu schém a návrh plošných spojov, bol doplnený nielen o SVG a Pick&Place export, vyhľadávanie prvkov na schéme, ale aj o inteligentné zadávanie rozmerov (napr: 2*15mils) ale aj o množstvo vylepšení a opráv. Pribudol aj preklad do češtiny. [Download binárik je tu.](#)

Pohľad na vyhľadávanie prvku na schéme:



Pohľad na inteligentné zadávanie rozmerov:



Changelog

Library Editor:

- Add “filter” toolbar to filter element lists (#673)
- Support moving elements to other library (#638)
- Show warning in device editor if no pads are connected (#680)

Schematic Editor:

- Add SVG export for sheets (#656)
- Add “search” toolbar to find symbols in sheets (#671)
- Add possibility to rename sheets (#640)
- Fix possibly wrapping of items in schematic pages dock (#685)

Board Editor:

- Add pick&place file export (#639)
- Add SVG export for boards (#656)

- Add "search" toolbar to find devices in boards (#671)
- Sort items in "Change Device" context menu (#677)
- Fix duplicate vertices when drawing polygons (#672)
- Fix possibly disappearing airwires in some situations (#687)

BOM Export:

- Use comma instead of semicolon as separator (#678)

Miscellaneous:

- Deny newlines in net names and other identifiers (#637)
- Speed up UUID validation and thus the library scan (#651)
- Respect configured workspace length unit in editors (#684)
- Respect configured grid unit in statusbar of editors (#689)
- Improve keyboard navigation in dialogs (#690)
- Use wizard to create and switch workspace from ControlPanel (#688)
- Split workspace chooser and workspace initialization wizard (#652)
- Fix falling back to system language for untranslated strings (#645)
- Various internal code improvements and refactoring
- Many translation improvements and fixes

Installer:

- Change default installation directory on macOS to /Applications (#644)

New languages:

- Czech (93% translated)
- Chinese (Taiwan) (99% translated)

[Projekt na GitHub-e](#)

[Diskusia \(ENG\)](#)

[Dokumentácia \(ENG\)](#)